

# WELCOME TO WAIVER WORLD

## Waivers 101



# WHAT IS A HOME AND COMMUNITY BASED (HCBS) WAIVER?

- The Ohio Department of Job & Family Services has oversight on all HCBS/Medicaid Waivers
- HCBS Waivers administered by DODD
  - Individual Options (IO)
  - Level One
  - Self Empowered Life Funding Waiver (SELF)
  - Transitions DD



# WHAT IS A WAIVER

- ▶ A waiver is a way that Medicaid can pay for services to keep a person with a disability in their home, or within the community so that the person does not have to move to a long term care facility, or nursing home.



# WHY WAIVERS?

- ▶ Once enrolled the County Board pays 40% of the cost of the waiver services for the life of the person (unless they disenroll) – this is called the “match”
- ▶ Medicaid pays the other 60% of the cost of services

# CURRENT ENROLLMENT IN STARK COUNTY

Resources are only available for limited waiver enrollments.

- ▶ Request LI waivers for “Adult Services Refinancing”
  - Allows more individuals to receive services
  - Employment Services paid for by local dollars prior to waiver enrollment
- ▶ Emergency waiver requests are reviewed by SSA Leadership Team
- ▶ Waiting List Project Initiative

# QUALIFICATION FOR WAIVER SERVICES

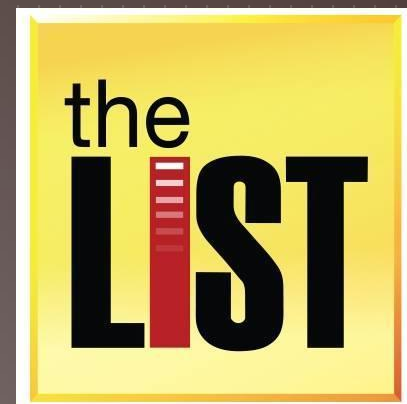
## Medicaid Eligibility

- Meet disability test (as determined by Social Security – based on ability to work)
- Meet income requirements
  - Resources/Assets less than \$1500 (excludes one house and 1 car)
  - Monthly income (does not include SSI benefit)

## ICFDD Level of Care Requirements

- Meets Medicaid eligibility
- Qualifying diagnosis present
- Documented Substantial Functional Limitations (must have 3)

# THE WAIVER WAITING LIST



How do you get on the list?

- Apply at ODJFS/Medicaid office directly
  - Contact assigned SSA for assistance
  - Contact SSA department Administrative Assistant
- 
- ❖ Once on the list your date of request and any applicable priority groups are used to manage your status on the list.

# WAITING LIST MANAGEMENT

The County Board is obligated to give priority to individuals on the waiting list who...

- ▶ Meet Emergency Criteria
- ▶ Have an Aging Caregiver
- ▶ Allow for Adult Services Refinancing
- ▶ Allow for Supported Living Refinancing
- ▶ Are Adults with Intense Needs
- ▶ Are Children with Intense Needs



# EMERGENCY CAPACITY

- ▶ Available to County Boards when an individual presents with an emergency as assessed by the SSA department
- ▶ Emergency is defined as any situation that creates for an individual with mental retardation or developmental disabilities a risk of substantial self-harm or substantial harm to others if the action is not taken within 30 days.

Source: ORC 5126.042



# INDIVIDUAL OPTIONS (I/O) WAIVER

Ohio Developmental Disabilities Profile (ODDP) assessment determines the budget for services (excluding day services):

Services Available (not a comprehensive list):

- **Homemaker Personal Care (HPC)**
  - tasks at home/community to assist with daily living.
- **Transportation**
- **Modifications/Adaptations**
- **Home Delivered Meals, Interpreter, Social Work, Institutional Respite, Adult Foster Care, Remote Monitoring, and Adult Family Living**

Acuity Assessment is used to determine staffing/budget:

- **Day Array Services/Non-Medical Transportation**

# LEVEL ONE WAIVER

| <b>\$5,000 Annually</b>  | <b>\$7,500 Every 3 Years</b>  | <b>\$8,000 Every 3 Years</b>                                      | <b>Day Services –<br/>AAI assessment<br/>is completed for<br/>budget</b>                                  |
|--|---|---|---|
| <ul style="list-style-type: none"><li>• Homemaker Personal Care</li><li>• HPC Community Transportation</li><li>• Institutional/ Informal Respite</li></ul> | <ul style="list-style-type: none"><li>• Modifications</li><li>• Adaptive Equipment</li><li>• Home Delivered Meals</li><li>• Remote Monitoring</li></ul> | <ul style="list-style-type: none"><li>• Emergency Funds</li></ul> | <ul style="list-style-type: none"><li>• Day Array Services</li><li>• Non-Medical Transportation</li></ul> |

# TRANSITIONS DD (TDD)

- No new enrollment
- Waivers are transferring to other DD waiver types by 2017

## Services Available:

Provides supports to more medically fragile individuals.

- Personal Care Aide
  - ▶ Nursing
  - ▶ Adult Day Health
  - ▶ Emergency Response System, Home Delivered Meals, Home Modifications, Out of Home Respite (Nursing Facilities included), Supplemental Adaptive and Assistive Devices

# SELF WAIVER

For Children – Up to \$25,000/span available

For Adults – Up to \$40,000/span available (includes all services)

- ▶ Support Brokerage
- ▶ Community Inclusion (Personal Assistance, Transportation)
- ▶ Functional Behavioral Assessment & Clinical/Therapeutic Intervention
- ▶ Participant-Directed Goods and Services
- ▶ Participant/Family Stability Assistance
- ▶ Remote Monitoring & Equipment
- ▶ Residential Respite, Community Respite
- ▶ Day Services, Integrated Employment, & Non-Medical Transportation

# INFORMATIONAL RESOURCES

- Ohio Department of DD

<http://dodd.ohio.gov/Pages/default.aspx>

Please see this site for handbooks related to the Waivers and the Waiting List \*\*Click on Site Links, Publications

QUESTIONS?